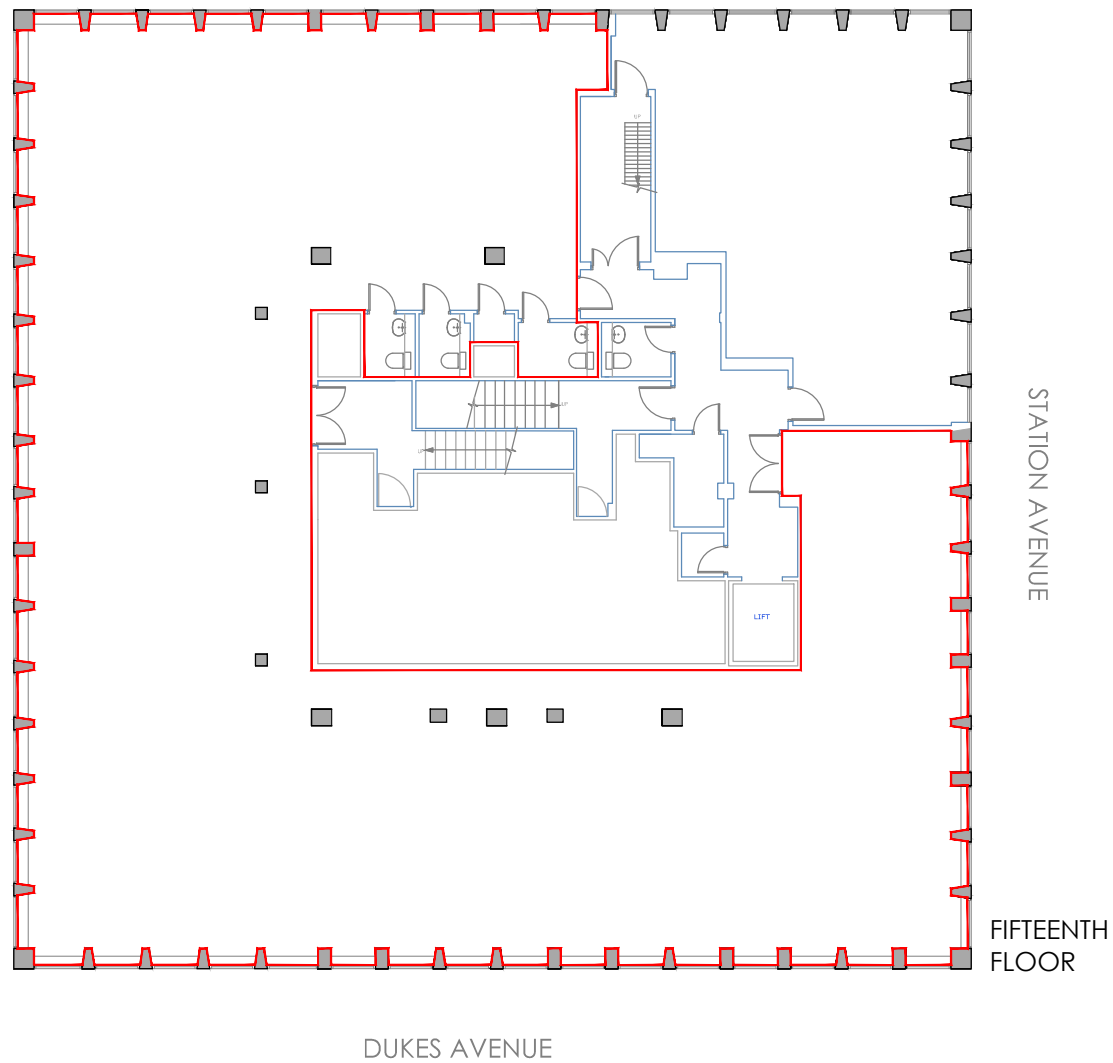


PLEASE NOTE, THIS IS AN A4 PLAN. IT SHOULD NOT BE ENLARGED OR SHRUNK TO FIT. WHEN PRINTING SET THE SCALE TO 'NONE'



SCALE 1:200

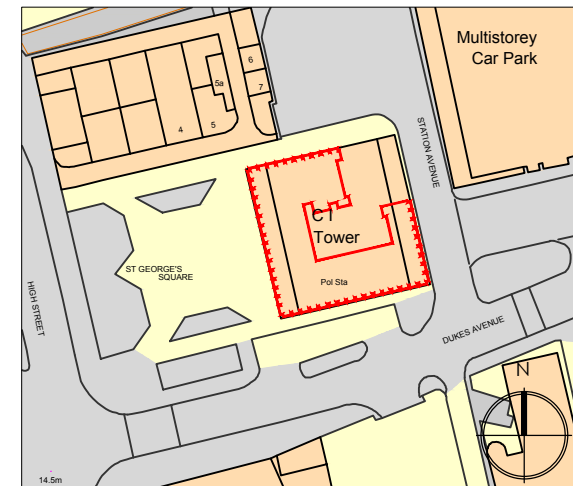


drawing address  
C1 TOWER  
ST GEORGES SQUARE  
NEW MALDEN, KT3 4TE

location/details  
FIFTEENTH FLOOR  
LEASE PLAN

date  
14/08/18  
dwg. no.  
PP5359-01

scale  
1/200  
sheet  
A4



LOCATION PLAN SCALE 1:1250